



# GRK 6 Polyclonal Antibody

<b>Catalog No</b>	YP-Ab-14767
<b>Isotype</b>	IgG
<b>Reactivity</b>	Human;Mouse;Rat
<b>Applications</b>	WB;IF;ELISA
<b>Gene Name</b>	GRK6
<b>Protein Name</b>	G protein-coupled receptor kinase 6
<b>Immunogen</b>	The antiserum was produced against synthesized peptide derived from human GRK6. AA range:10-59
<b>Specificity</b>	GRK 6 Polyclonal Antibody detects endogenous levels of GRK 6 protein.
<b>Formulation</b>	Liquid in PBS containing 50% glycerol, 0.5% BSA and 0.02% sodium azide.
<b>Source</b>	Polyclonal, Rabbit,IgG
<b>Purification</b>	The antibody was affinity-purified from rabbit antiserum by affinity-chromatography using epitope-specific immunogen.
<b>Dilution</b>	Western Blot: 1/500 - 1/2000. Immunofluorescence: 1/200 - 1/1000. ELISA: 1/10000. Not yet tested in other applications.
<b>Concentration</b>	1 mg/ml
<b>Purity</b>	≥90%
<b>Storage Stability</b>	-20°C/1 year
<b>Synonyms</b>	GRK6; GPRK6; G protein-coupled receptor kinase 6; G protein-coupled receptor kinase GRK6
<b>Observed Band</b>	65kD
<b>Cell Pathway</b>	Membrane; Lipid-anchor.
<b>Tissue Specificity</b>	Widely expressed.
<b>Function</b>	catalytic activity:ATP + [G-protein-coupled receptor] = ADP + [G-protein-coupled receptor] phosphate.,function:Specifically phosphorylates the activated forms of G protein-coupled receptors.,PTM:It is uncertain whether palmitoylation is on Cys-561 and/or Cys-562 and/or Cys-565.,similarity:Belongs to the protein kinase superfamily.,similarity:Belongs to the protein kinase superfamily. AGC Ser/Thr protein kinase family. GPRK subfamily.,similarity:Contains 1 AGC-kinase C-terminal domain.,similarity:Contains 1 protein kinase domain.,similarity:Contains 1 RGS domain.,tissue specificity:Widely expressed.,
<b>Background</b>	This gene encodes a member of the guanine nucleotide-binding protein (G protein)-coupled receptor kinase subfamily of the Ser/Thr protein kinase family. The protein phosphorylates the activated forms of G protein-coupled receptors thus initiating their deactivation. Several transcript variants encoding different isoforms have been described for this gene. [provided by RefSeq, Jul 2008],



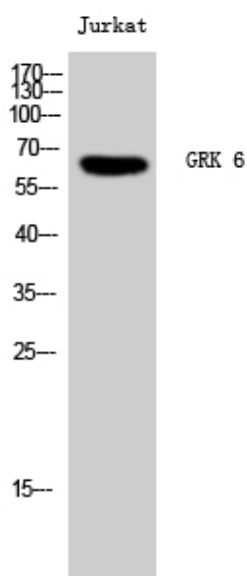
### matters needing attention

Avoid repeated freezing and thawing!

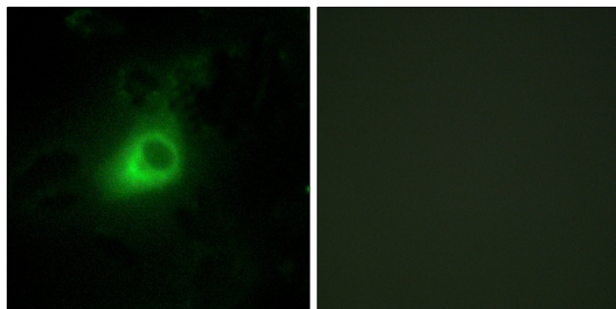
### Usage suggestions

This product can be used in immunological reaction related experiments. For more information, please consult technical personnel.

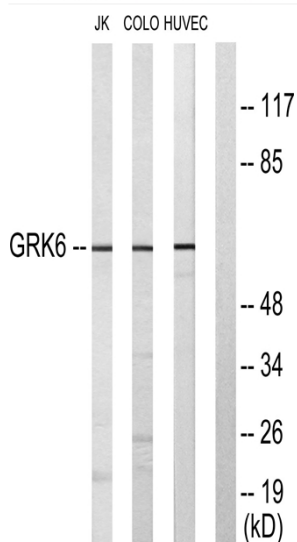
## Products Images



Western Blot analysis of Jurkat cells using GRK 6 Polyclonal Antibody



Immunofluorescence analysis of HeLa cells, using GRK6 Antibody. The picture on the right is blocked with the synthesized peptide.



Western blot analysis of lysates from Jurkat, COLO205, and HUVEC cells, using GRK6 Antibody. The lane on the right is blocked with the synthesized peptide.